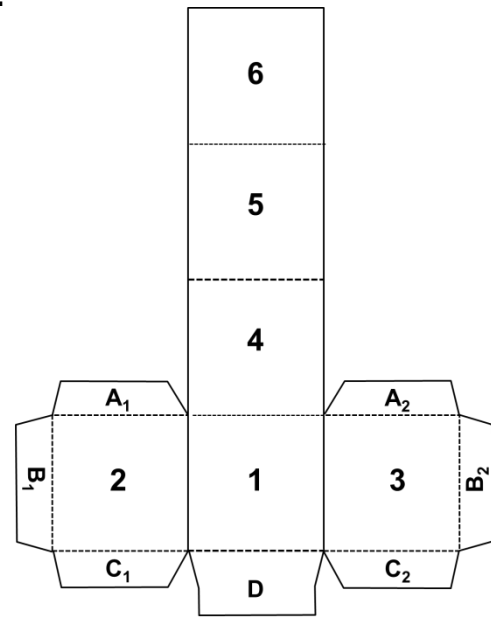
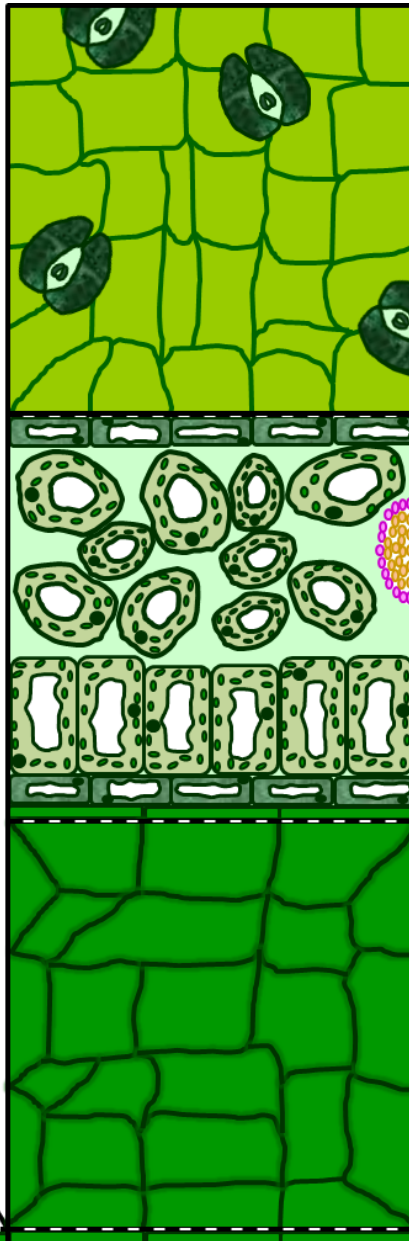


LEAF STRUCTURE CUBE

INSTRUCTIONS:

- 1 Cut the template out carefully around the outside (solid lines)
- 2 Fold along the dotted lines.
- Ensure that the folds create a sharp crease. This will make sticking it together much easier.
- 3 Put glue onto **Tabs A1** and **A2**
- 4 Fold in **Faces 2 and 3** and stick them, using **Tabs A1 and A2**, to the inside of **Face 4**
- 5 Put glue onto **Tabs B1** and **B2**
- 6 Stick **Tabs B1 and B2** to the inside of **Face 5**
- 7 Put Glue onto **Tabs C1 and C2** and **Tab D**
- 8 Stick **Tab D** down onto the top of **Tabs C1 and C2**
- 9 Fold over **Face 6** and stick it down onto **Tabs C1, C2 and D**

Face 4 is the upper, waxy surface of the leaf
Face 6 is the underside



Cut around the outside
 Fold along dotted lines

